

INSTALLATION GUIDE: VFLOOR SCANDINAVIAN STYLE

SPC click planks with integrated acoustic underlay

Introduction

The product is meant to be installed by a professional flooring installer. Make sure to carefully read through this guide so that you may know the best way to prepare for the installation. Failure to comply with the instructions given these guides, as well as improper installation, will void the warranty given by Vfloor. If you have any questions regarding this guide, or have any questions not covered in these documents; please contact: info@laattapiste.fi

General guidelines

Flooring should be one of the last items installed in any new construction or remodel project. Handle with care in the process of transportation and handling to avoid damage to the locking of flooring. Please put it on the flat ground, no erect or sideways. Inspect the SPC carefully for color, finish, sheen and defects before installation. Ensure adequate lighting for proper inspection. The warranty does not cover materials with visible defects once they are installed. If there are any doubts to the quality, dimensions or appearance of the SPC flooring, do not install. Please contact your supplier.

Site condition (before installation)

Temperature and humidity

Room temperature: 15 °C–30 °C

Subfloor temperature: 10 °C–27 °C

Room's relative humidity: 40 % – 65 %. If the installation is carried out during rainy seasons, please pay attention to control the humidity.

The floor should be covered from sunlight exposure. If the room has glass windows and receives the sunlight directly onto the floor, please use curtains or blinds to block the sunlight.

Subfloors

Flat: Make sure the surface is flat. Max variation is **2 mm over 2 meters ($\pm 2 \text{ mm} / 2 \text{ 000 mm}$)**. Use self leveling compound if necessary to have the desired flatness.

Clean: Make sure the subfloor is free of dust, grease, glue, old adhesive and debris. It should be well cleaned and vacuumed before installation. Damp rot, fungal or insects must also be taken care of.

Strong: The subfloor must be in good structural condition, solid, stable and non-flexing. For example, if the subfloor is ceramic tile or wood flooring, it must be checked to see it is well bonded to its subfloor. Cushioned or multi-layers flooring, of any kinds, are not allowed as the subfloor. They must be removed. **Note!** Scandinavian Style SPC has an integrated IXPE-underlayment. Do not install any other underlayment under this product.

Dry: Make sure the subfloor, of any kinds, is totally dry before installing.

Concrete subfloor residual humidity according to the Finnish coating guidelines for concrete structures (by 45 / BLY 7 Betonilattiat 2023) the relative humidity (RH) at the evaluation depth A of the structure must be at most 85%, and at a depth of 0.4 x A, at most 75%. Measurement results must be documented.

Wood subfloors must have $\leq 12\%$ moisture content and should not vary more than 4% from the SPC.

Subfloor Heating Systems

- Must be embedded in concrete or under subfloor, not exposed.
- Must be ~ 38 mm below the surface layer of the concrete slab.
- Surface temperature must not exceed 27 °C.
- Must be operated at normal living temperature for 14 days before installation of SPC.
- Must be turned off 48 hrs before installation. Restart gradually at increase temperature of 2°C per day.

Expansion gaps and Partition

- Maintain an expansion gap between 5-15mm (depend on how large the room is, and the temperature fluctuation)
- Usually 2mm for every meter of length) anywhere the SPC meets the walls, structural support, stairs, breakfast bars, fireplaces, doorways. Do not install the flooring under fixed furniture like heavy kitchen cabinets or islands.
- Use accessories to separate the flooring of different rooms, as their usages and temperatures are different.
- Floor partition is required if area exceeds 250 square meters and the length or width exceeds 15 meters
- Structural movement joints must not be covered with the flooring; use a suitable movement joint profile.

Acclimatization

Acclimatize the SPC before installing in sealed unopened boxes placed on the floor horizontally at least 48 hours. You can stack boxes upon each other, but do not stack more than 5 boxes high to avoid pressure. Keep the room temperature between 18–29 °C. Do not store the flooring outdoors, in an outbuilding, or anywhere with damp or condensation problems. If the SPC has been transported in cold conditions, the acclimatization process may take longer. At the time of installation, the product temperature should be the same as the room temperature.

Planning before installation

We recommend adding 5–15% to the actual required square meter amount to account for cutting allowance, installation waste, and possible replacement needs.

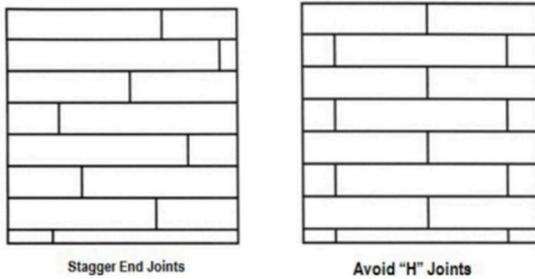
The most common way is to install the planks **along side with the longest wall** of the room. This gives the most natural, aesthetic flow when you enter the room. This layout is applied when the room is rectangular. For example, in a long hallway or rectangular living room, lay the planks parallel to the longer side.

Parallel to incoming natural light (especially near windows) is also a choice if you have large window or sliding door letting in the sunlight. This creates a smoother look under angled, low sunlight. However, please always use blinds or curtains to cover the windows to prevent long-time exposure to direct, strong sunlight.

Before installation can begin, a few calculations need to be made, and you might have to do some cutting before you can start laying. When you've chosen your starting wall, measure the width of the room from there and divide that by the width of the flooring panels. This will give you the number of rows of boards you'll lay and the width of the last row. If your last row is going to be under 60mm wide, cut the boards in your first row lengthwise accordingly so that your last row isn't too narrow.

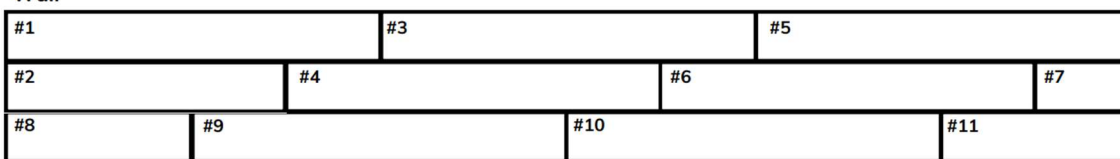
Make sure to stagger end joints by at least 20 cm. Avoid installing pieces shorter than 35 cm at the beginning or end of rows.

Avoid "H" patterns, where the end joint aligns with an end joint in other nearby rows.



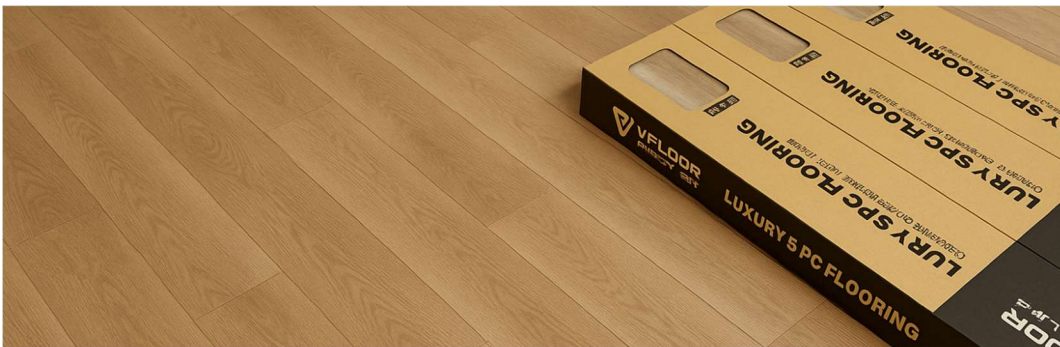
Divide into a minimum of three steps, as shown in these diagrams (depending on the plank length) for subsequent steps. Install shorter planks (#7) in room corners, which are less used. Avoid small plank at doorways and high-traffic areas.

Wall



Blending planks from several boxes and make sure all boxes are from the same batch

There will be slight variations between batches in terms of the colors. Therefore, for the result to be perfectly balanced in color and details, please blend the planks from several boxes and make sure to use boxes from just 1 batch for 1 site.



DURING INSTALLATION PRECAUTIONS

Protect the floor during construction

Always protect the surface of the flooring during installation. Use paper or cardboard that will allow the floor to breathe. Never use plastic or polyethylene sheeting to cover the flooring as this will trap moisture and could cause damage.

Click the planks together

In the process of installation, the lock button can be gently buckled in place. Do not use tools or heavy objects to knock the lock button, so as to avoid over-tight floor installation and locking damage. We advise you to use a rubber hammer for installation.

During installation, engaging the next plank at a 30 degrees angle to the front plank. Use a rubber hammer to lightly tap the locking system if necessary, making sure that they are tight before sliding and securing in place. This step is to avoid breaking the below locking system. Lock the short end click with a gentle tap of a rubber hammer.

Sometimes, dust or things can get into the clicks of the planks, please check and remove dust before locking the planks together. Big particles can cause the planks to incorrectly fit together, causing potential issues in the future.

Vfloor Scandinavian Style SPC has the Swedish patented Välinge 5G click system.



Door jambs

If there is a wooden door jamb, we recommend undercutting it according to the thickness of the flooring. Install the flooring underneath the door jamb but leave the necessary expansion gaps.

Skirting, wallbase

When installing the skirting or wallbase, always fix them to the walls. Never fix them to the floor itself as this will prevent the natural expansion and contraction of the flooring into the expansion space.

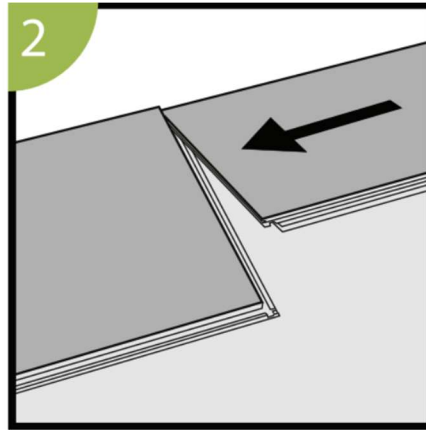
Conditions

Please make sure that all conditions written in this installing guide remain during installation. The subfloor must be dry, clean and flat. The temperature and humidity must not change too much.

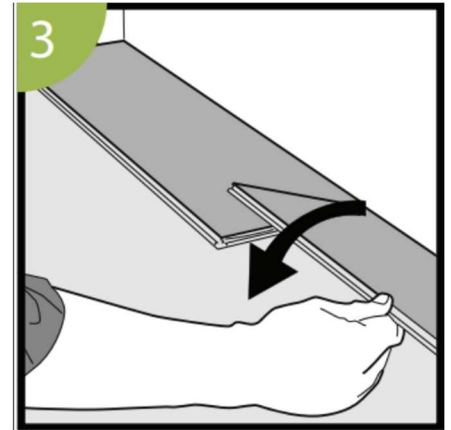
INSTALLATION: Scandinavian Style planks with Välinge 5G click



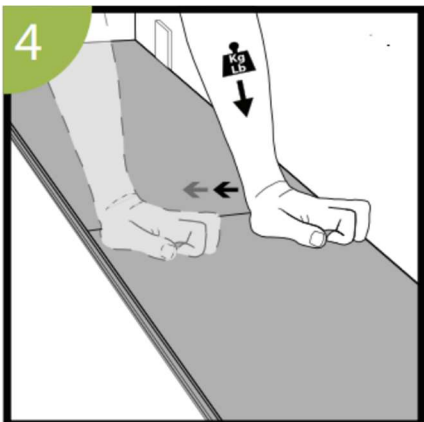
Starting with a full plank along the wall, calculate how many widths there are across the room. If this means there will be a row of narrow planks along the opposite wall, cut the first row accordingly. Install this product with the tongue side/ cut edge facing the wall. Install spacers between the plank and wall (minimum 5 mm).



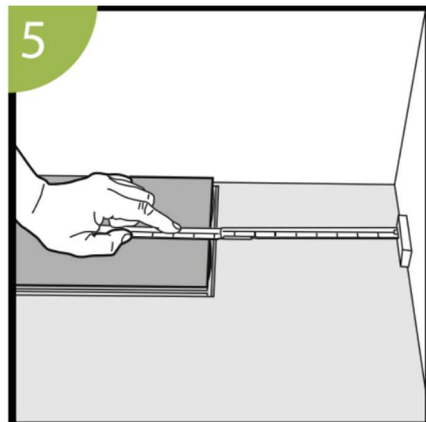
Second plank, first row. Place this panel gently close to the short end of the first one.



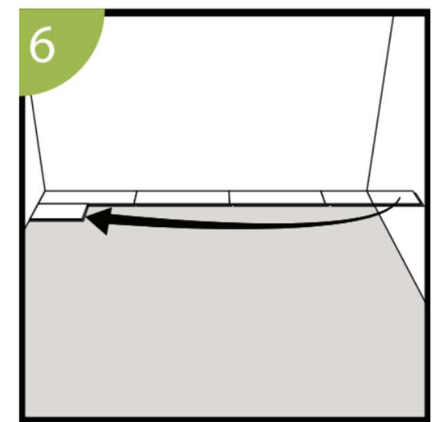
When folding down, it is important to start from the corner closest to the previous row, folding down towards the center, and continue towards the opposite long side. During the fold down, make sure the panels are close to each other



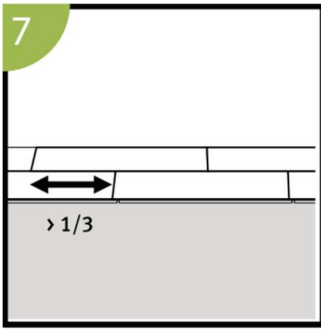
Afterwards press slightly along the short end just installed. Use a light tap of a rubber hammer.



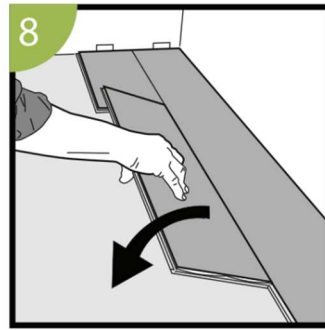
Start this new row with the leftover piece from the last row (min. length 35 cm). Insert the upper male profile of the long side of the plank into the corresponding lower profile of the long edge of the plank in the previous row, at a slight angle. Press down until it locks into place.



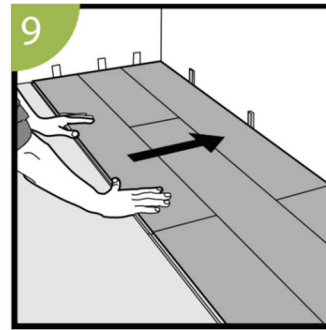
Second row, first plank min. length 35 cm. Put a spacer against the left wall.



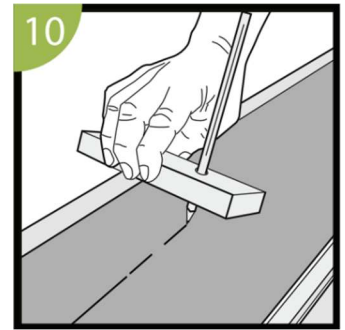
Staggered joint distance i.e. minimum distance between short ends of panels in parallel rows shall not be less than the given length. Minimum 20 cm for the Scandinavian Style SPC planks.



Second plank second row. Place the panel gently and close to the short end of the previous panel and fold it down in a single action movement.



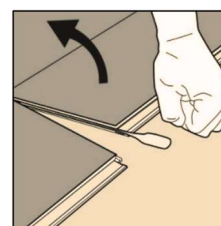
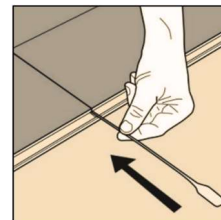
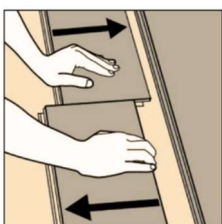
After 2-3 rows adjust the distance to the front wall by placing spacers (min. 5 mm)



Last row (and perhaps also first row). Minimum width 60 mm. Make a simple drawing tool (piece of wood with a hole) and mark the panel along the wall. Cut the panels lengthwise including the flexible tongues.

Disassembling (sliding without tool)

Separate the whole row by carefully lifting up and slightly knocking just above the joint. Fold up and release the whole long side. Disassemble the panels by sliding horizontally.

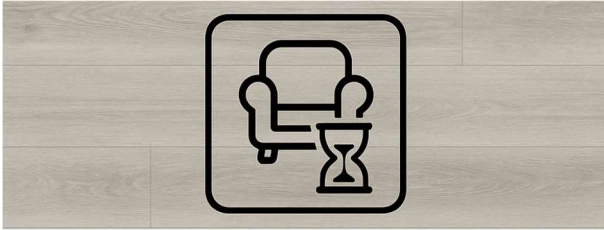


Disassembling with Välinge -tool:

Place a special Välinge Release Tool into the joint. Keep the left plank down to the floor and release the right plank - fold it up

AFTER INSTALLATION

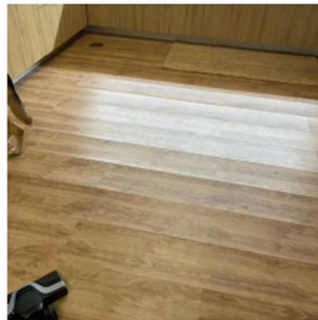
Wait at least 48 hrs before placing furnitures, especially heavy ones. Within 48 hrs, remain the temperature, humidity and other conditions as stable as possible compared to before and during installation.



SOME EXAMPLES – HOW TO AVOID RISKS

Avoid installing the floor in “H” pattern

If the joints of the planks line up in every other row, it creates a weak structural pattern. This can lead to separation, gapping, or even buckling over time, especially in areas with high foot traffic. An H-pattern can create stress along the aligned joints, increasing the risk of plank movement and damage.



Avoid too small pieces at the end of the floor

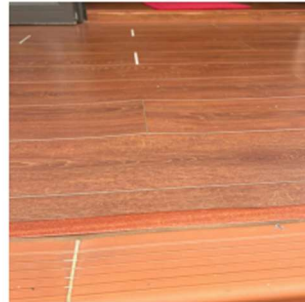
Small pieces like the photo will have much less holding force of the other planks next to it. Therefore, if it is placed at the end where people walking on (doorway) or where the heavy object is placed, high chance that it will easily break, and potential lead to mold or mildew growth because moisture, water can enter the floor through this spot.



Direct sunlight exposure, near uncovered glass windows, slide doors, not enough expansion gaps

Due to their primarily PVC/plastic composition, the film and wearlayer are susceptible to shrinkage when exposed to temperature fluctuations. While the SPC core remains dimensionally stable, the shrinking top layers (film and wearlayer) can exert force on the planks, causing the edges to curl upwards.

With considerable fluctuation of temperature, expansion gaps must be enough for the floor to expand during high temperature. Lack of gaps will lead to the floor to have no space to expand, causing it to push against each plank and curve up, also it can break the clicks.

**Importer in Finland:**

Laattapiste-Pukkila Oy

p. 09 878 031

info@laattapiste.fiwww.laattapiste.fi